

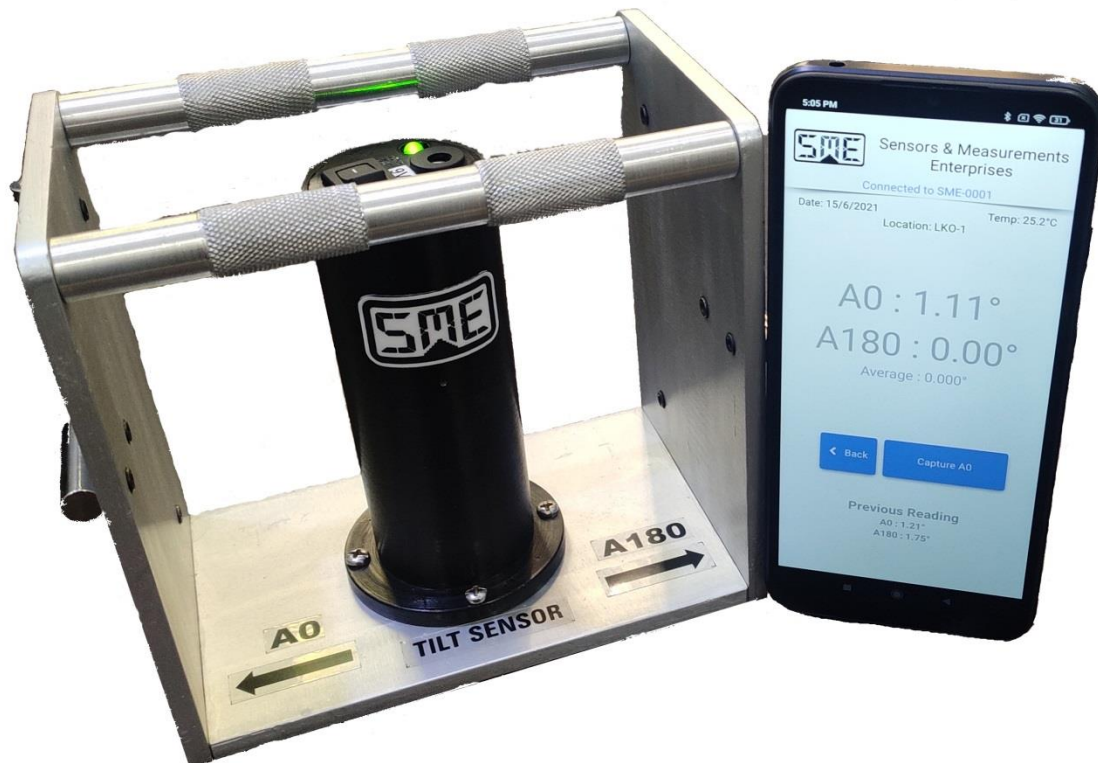


MODEL SME-2200-P

PORTABLE TILTMETER

FEATURES

- * Excellent Long-terms stability
- * Rugged design
- * High Sensitivity.
- * Easy in Installation



DESCRIPTION

The SME Model 2200-P tilt meter is designed to measure the tilt in structures such as Dam body, high rise building, and embankments and also for measurement related to the stability of slopes, open pits and the wall of excavations e.g. slurry walls. The tilt plates permanently attached to the structure to be measured. The measurement can be made on horizontal or vertical surface. Subsequent sets of readings shows how the structure is behaving and will give an indication of permanent inclination as time progresses.

OPERATION

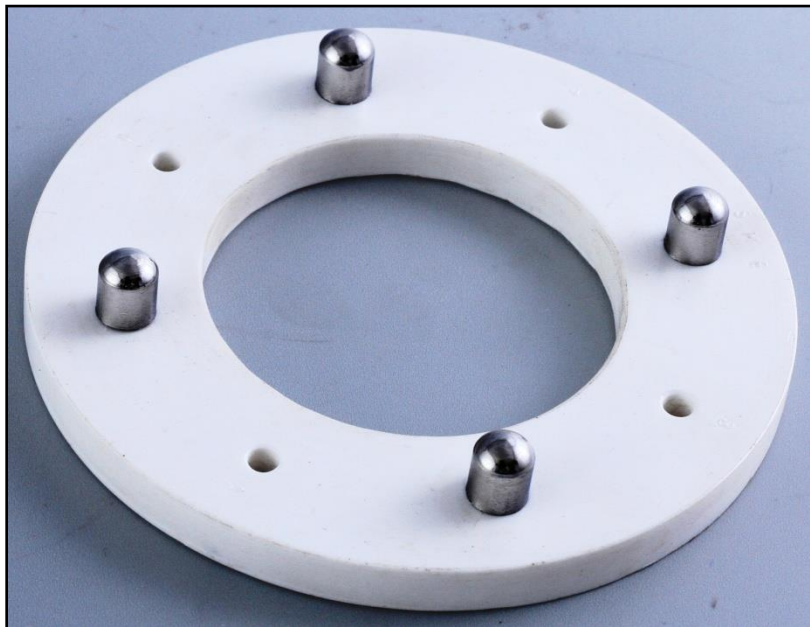
The sensor is biaxial semiconductor type which is mounted in a rigid body. The tilt plate is to be mounted on the structure at different location vertical or horizontal.

The readings are taken with the help of Android Mobile Tilt meter Application directly in degree by connecting the sensor to Bluetooth of mobile. The data can be stored and then print out can be taken.

SPECIFICATIONS

Sensor	:	Uni-axial
Model	:	SME 2200-P
Full scale Range	:	$\pm 15^\circ$.
Resolution	:	0.02°
Material	:	Anodized Aluminum (except mounting bracket)
Accuracy	:	$\pm 0.1\%$ fs
Temp. Range	:	-20°C to 80°C
Battery	:	Lithium ion 8.4 volt (Use only 9 Volt Charger)

MOUNTING PLATE



Due to continuous development program the specification and dimensions are subject to change without notice. Our engineers do undertake the work for development as per the customer's requirement.

Sensors & Measurements Enterprises

Works cum office : A-65(1), Govt. Industrial Estate Talkatora Road, Lucknow-226011,
Telefax: 0522-2661617, mob. +91-9415101236, 9565563203 email: smeprajapati@gmail.com,
smegeotech@gmail.com, website: www.smegeotech.com.