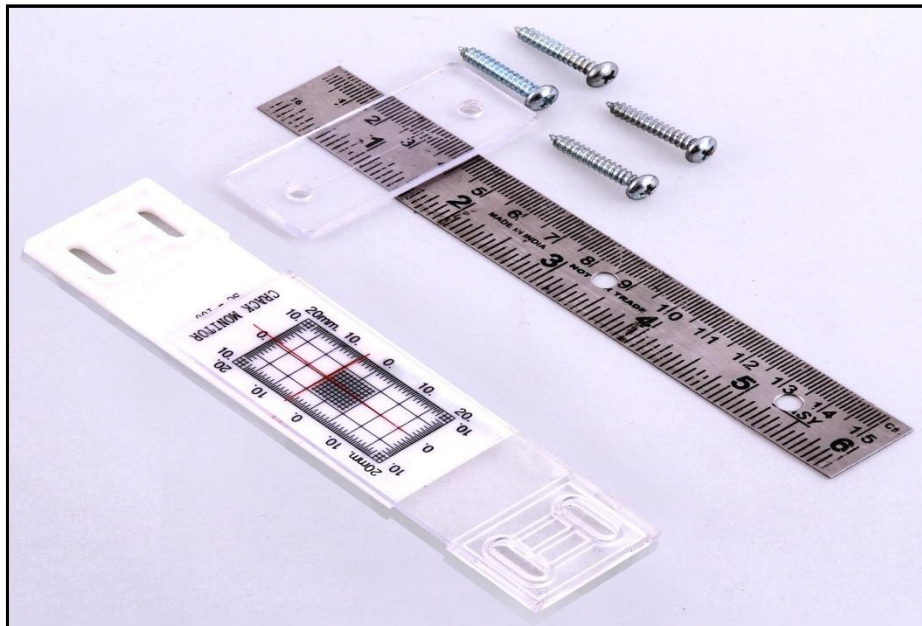
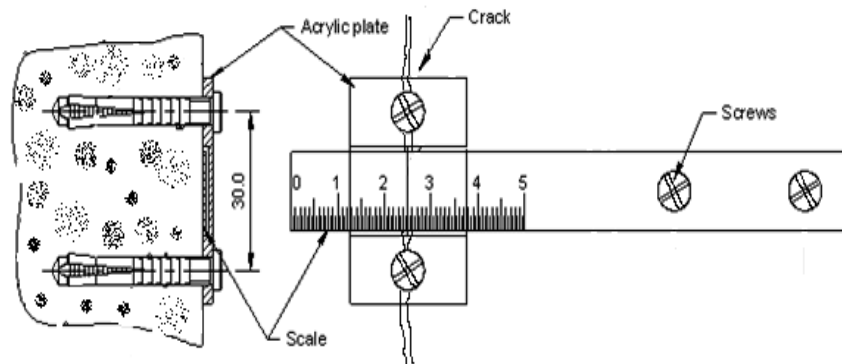


## CRACK METER (MECHANICAL TYPE)



### INTRODUCTION:

SME crack meters are ideally suited for measurement of movement. These measurements are important for monitoring the behavior of civil structure and building during the excavation.

The crack meter is used to measure change in width of a surface crack. It is used to monitor cracks in concrete structures, rock, bridges, pavement slabs, etc. The joint meter is ideally suited for measurement of displacement/movement across joints such as joint opening between two concrete/masonry blocks in a dam.

### FEATURES

1. Reliable & accurate.
2. Simple to install.
3. Simple to read.
4. Rugged construction.
5. Low cost.

## APPLICATIONS

Crack meter to monitor cracks in.

1. Concrete and arch Dams.
2. Concrete structures.
3. Rock, soil and masonry structures
4. Buildings affected due to nearby construction or excavation activity.

## CRACK METER:-

The SME Model crack meter can measure the change in width of a surface crack with a resolution of 0.5 mm. It consists of a graduated scale with a resolution of 0.5 mm and a transparent acrylic plate with a hairline cursor mark. The graduated scale and the transparent acrylic plate are assembled across the crack with expandable anchors in 5 mm diameter holes drilled to a depth of 30 mm as shown in the figure.

As the crack opens or closes, the graduated scale and the cursor move relative to each other representing the amount of movement occurring. The reading of the marking is initially noted and is taken as a base.

Due to continuous development program the specification and dimensions are subject to change without notice. Our engineers do undertake the work for development as per the customer's requirement.

## Sensors & Measurements Enterprises

**Works cum office :** A-65(1), Govt. Industrial Estate Talkatora Road, Lucknow-226011,  
Telefax: 0522-2661617, mob. +91-9415101236, 9565563203 email: [smeprajapati@gmail.com](mailto:smeprajapati@gmail.com),  
[smegeotech@gmail.com](mailto:smegeotech@gmail.com), website: [www.smegeotech.com](http://www.smegeotech.com).